

# Management of e-Cataloguing Workflow at the University of Jos Library



by

**Muhammad Etubi**

Cataloguing Unit

University of Jos Library

e-mail: [etubimk@unijos.edu.ng](mailto:etubimk@unijos.edu.ng)

A Paper Presented at The University of Jos Library Seminar Series on the 23rd July, 2015.

# Introduction

- The application of computer to cataloguing and classification is a big relief for libraries as cataloguers would not have to use heavy cataloguing and classification tools like Library of Congress and Dewey Decimal Classification schedules and subject headings. Yusuf (2009) confirms that most libraries have left manual cataloguing for electronic cataloguing. This change in implements for processing library materials is in line with the desire to embrace new technologies in library functions and services, and to adequately meet the increasing information needs of library users. Cataloguing work is facilitated by a search in the local database, and accessibility to external bibliographic databases with the aid of z39.50 protocol search points.
- However, electronic cataloguing (e-cataloguing) is not effective without understanding its workflow. Reitz (2004) assures a workflow allows the necessary steps in a task are completed in an appropriate order, and that systematic analysis of workflow leads to efficiency of work. Adebayo (2013) opined that the best practices for cataloguing workflow are those targeted at fulfilling the goals of the library in terms of timeliness and quality. A workflow is a process in which tasks are completed. Therefore electronic cataloguing workflow is a process for completing the task of cataloguing using computer systems.

# Key Terms

- e-Cataloguing
- Workflow
- Workflow Chart
- Management
- University Library

# Objectives

- To indicate importance of e-cataloguing workflow
- To indicate how to manage process involved in e-cataloguing
- To provide e-cataloguing workflow chart
- To determine factors affecting e-cataloguing workflow
- To make conclusion and recommendations

# Importance of e-cataloguing workflow

- An e-cataloguing workflow facilitates the understanding of the process involved in electronic cataloguing. The cataloguer knows what to do and in what sequence.
- It speeds up work in the cataloguing unit.
- A workflow ensures e-cataloguing process is completed on a library material before its exit from the Cataloguing Unit. A completed e-cataloguing process ensures quality output.
- Task in e-cataloguing process could be easily reassigned.
- Tasks that are no longer needed could be eliminated.
- It shows at a glance, with the aid of a chart, the various stages of e-cataloguing.

# Management of e-Cataloguing Workflow

- The University of Jos Library uses the cataloguing module of Koha open-source Integrated Library System to process library materials. The process of e-cataloguing involves five major functions:

Searching the catalogue,  
Copy cataloguing,  
Original cataloguing,  
Importing record, and  
Editing.

Current cataloguing process at the library involves to:

- Pick a book
- Fill cataloguing worksheet
- Search catalogue
- Copy cataloguing
- Search Z39.50
- Import record
- Create new record
- Scan bar code

# Management of e-Cataloguing Workflow cont.

- Itemize record
- Editing
- Save record
- Pencil verso of books
- Type catalogue cards
- Print catalogue cards
- Spine write books
- Paste date due slip
- Attach book pocket
- Write book card
- Register books
- Dispatch books

# Management of e-Cataloguing Workflow cont.

However, the management of e-cataloguing workflow is to ensure the handling of the process involved in e-cataloguing meets the needs and expectation of the library users in terms of timeliness and quality. The execution of this process requires the following:

a. Plan for cataloguing

get set tools of work:

Scanner,

stationery,

Cutter-Sanborn Three-Figure Author Table,

and books to be catalogued for the day need to be within an arm's reach.

Also Check power connection

Check network connection

b. Use of basic computer knowledge

highlight, copy and paste, scroll, etc

c. Search e-catalogue using:

Author

Title

International Standard Book Number I(SBN)

Call Mark

Library of Congress Card Number (LCCN)



# Management of e-Cataloguing Workflow cont.

## d. Copy Cataloguing

Reitz (2004) describes copy cataloguing as a change of a pre-existing bibliographic record to fit the features of the item in hand, with alterations to correct apparent errors and minor adjustments to reflect locally accepted cataloguing practice.

Add:

accession number

barcode number,

cataloguer's initials

and date.

navigation: 13 interfaces

## e. Original Cataloguing

create a new record

navigation: 15 interfaces

## f. Import bibliographic record

use Z39.50 protocol

search external databases

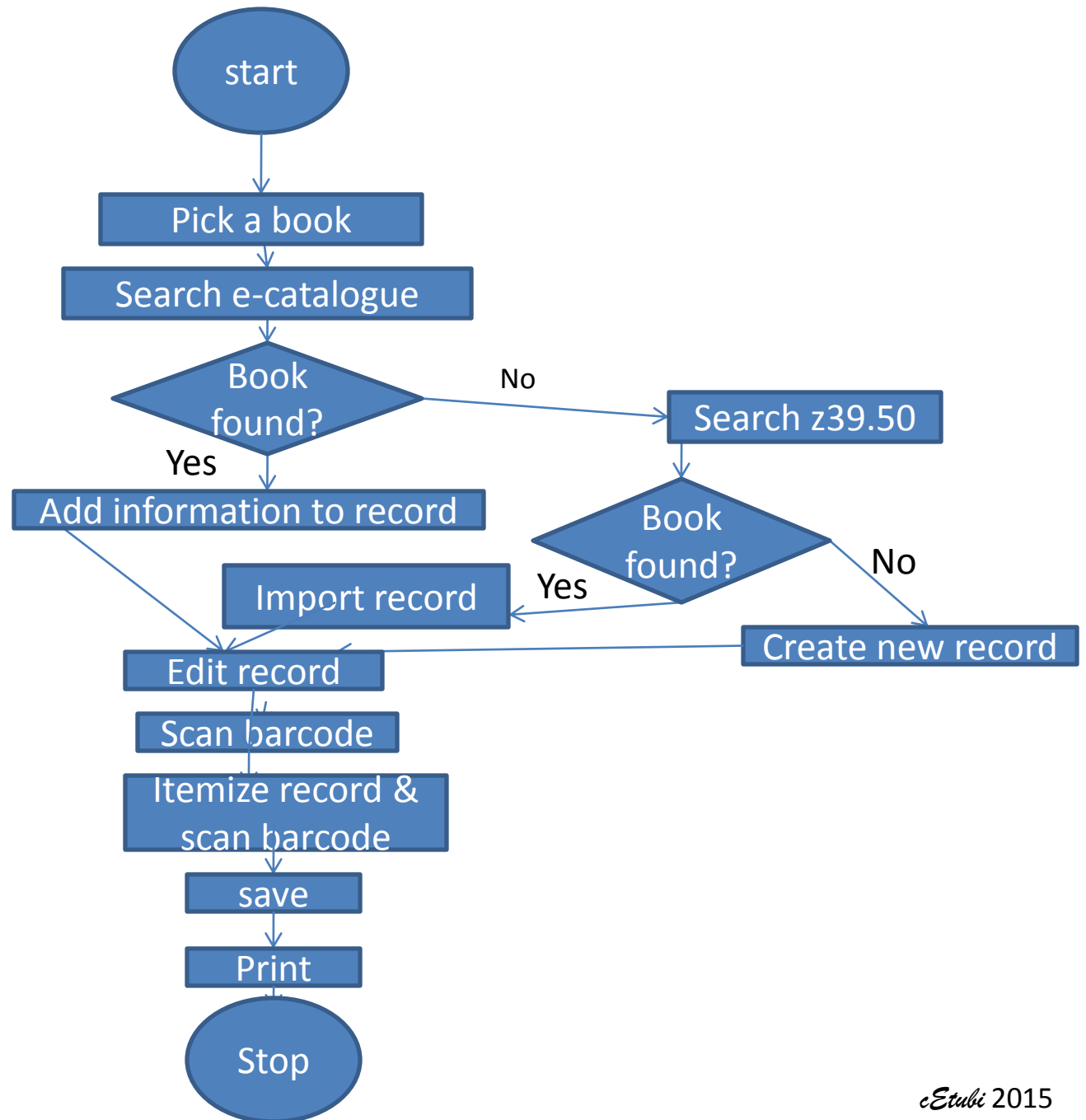
## g. Editing

Authority heading need to be verified.

# Workflow Chart

Nwalo (2003) defined a workflow chart as a way of showing many actions or events with the aid of a diagram. The following chart shows the e-cataloguing workflow of University of Jos Library.

# Workflow Chart on e-Cataloguing



# Factors affecting e-cataloguing workflow

- Cataloguing goals
- Lack of a defined workflow
- Excessive paper work
- Network access
- Navigation of multiple interfaces
- Typing of catalogue cards
- Cataloguers' multiple responsibilities
- Acquisition downloads
- Material to be catalogued
- Double handling of item
- Bibliographic source

# Conclusion

It is established that there exist a disconnect between filling cataloguing worksheets, retyping of catalogue cards, manual production of callmark labels and electronic cataloguing as they constitute drudgery factors in e-cataloguing workflow. The craving for the use of new technologies in library functions and services, and to adequately meet the increasing information needs of library users in academic libraries have made libraries to leave manual cataloguing for electronic cataloguing. Management of e-cataloguing workflow requires timely and quality execution of the e-cataloguing process. A workflow chart augments the understanding and execution of e-cataloguing workflow. Factors affecting e-cataloguing workflow are goals of the cataloguing unit, lack of a defined workflow, inadequate network access among others.

# Recommendations

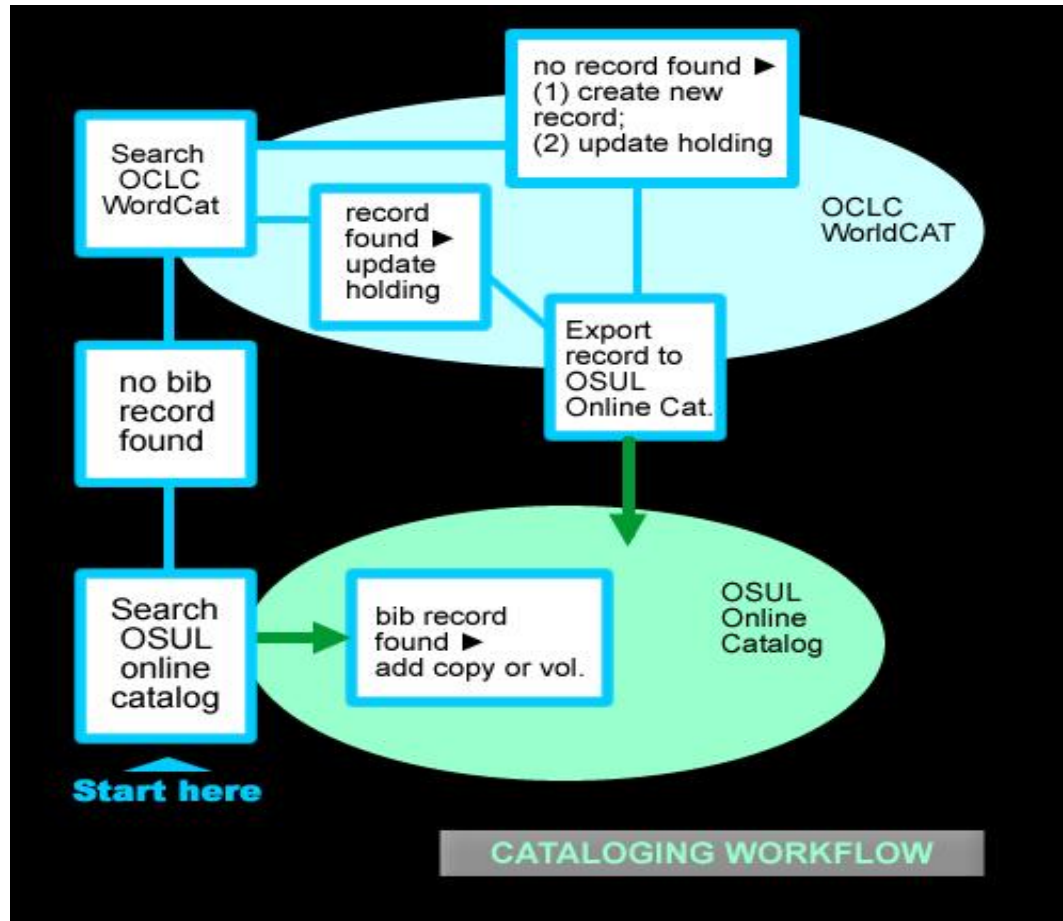
In view of the above it is recommended that:

- Cataloguing unit should have agreed cataloguing goals
- maintain a designed workflow chart
- have access to reliable and strong network
- eliminate retyping of authority heading cards
- encourage e-production of call mark labels.

# References

- Adebayo, O. (2013). Challenges Associated with Cataloguing Electronic Resources in Selected University Libraries in Southwest Nigeria. *Chinese Librarianship: An International Electronic Journal*, 36. Retrieved February 20, 2015 from [www.iclc.us/cliej/cl136adebayo.pdf](http://www.iclc.us/cliej/cl136adebayo.pdf).
- National Library of New Zealand cataloguing workflow. Retrieved July 13, 2015 from <http://nznuccataloguing.pbworks.com/f/1245994404/Connexion.jpg>
- Nwalo, K.I.N.(2003). *Fundamentals of Library Practice: A Manual on Library Routines*. Ibadan: Stirling-Horden Publishers (Nig.) Ltd.
- OSUL Cataloguing workflow. Retrieved July 13, 2015 from <http://library.osu.edu/staff/cataloging/NonRoman/images/workflow.jpg>.
- Reitz, J. M. (2004). *Dictionary for Library and Information Science*. Connecticut: Libraries Unlimited.
- Standard Spine Label Printing System. Retrieved July 15, 2015 from [http://www.computype.com/~media/Images/Computype/Product/Printers/standard\\_spine\\_label\\_printing\\_system.ashx?w=400](http://www.computype.com/~media/Images/Computype/Product/Printers/standard_spine_label_printing_system.ashx?w=400).
- Yusuf, F. (2009). Management of Change in Cataloguing: A Survey of Practices in Covenant University and University of Lagos, Nigeria. *Library Philosophy and Practice*. Retrieved June 19, 2015 from <http://digitalcommons.unl.edu/libphilprac/304>.

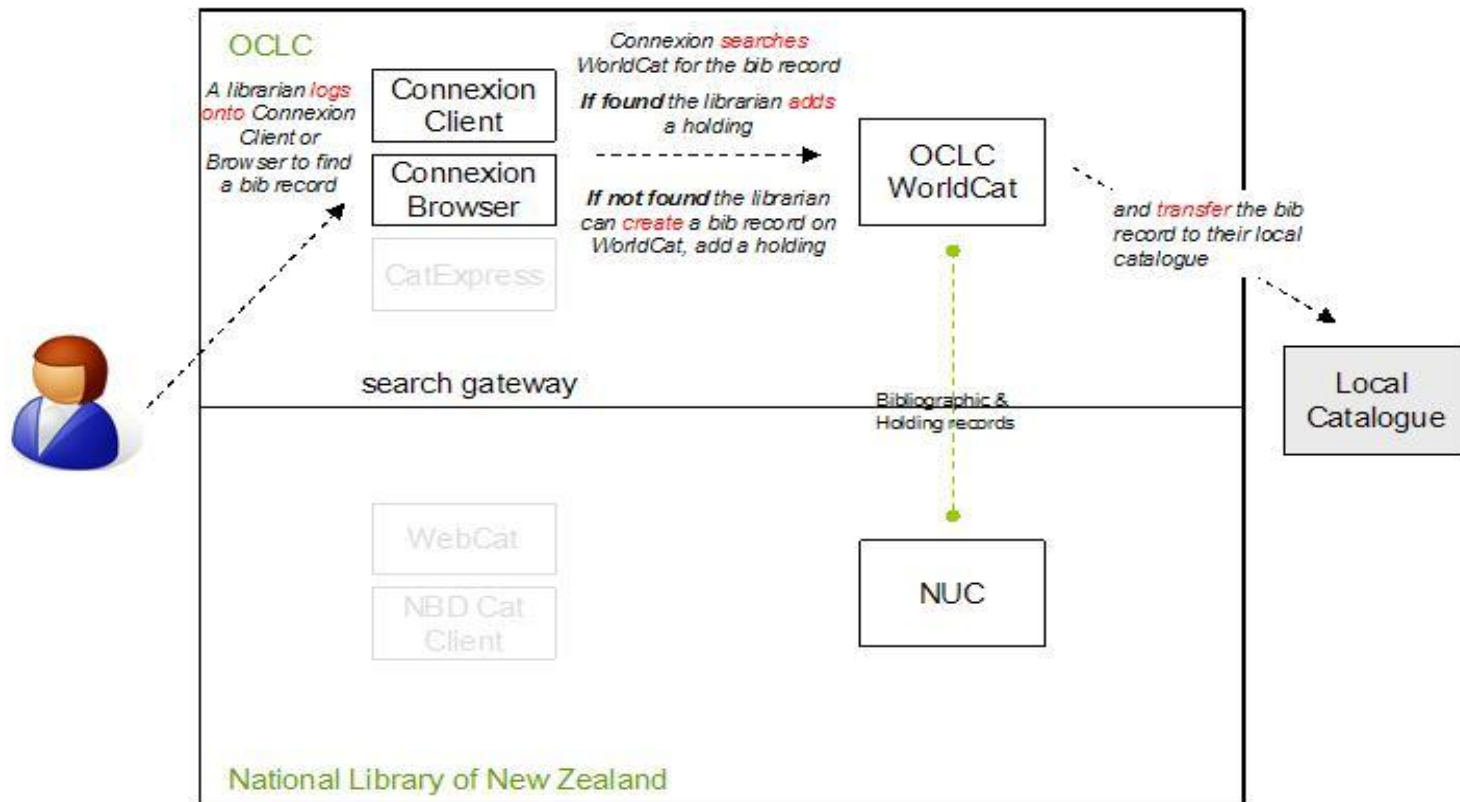
# OSUL e-Cataloguing Workflow Chart



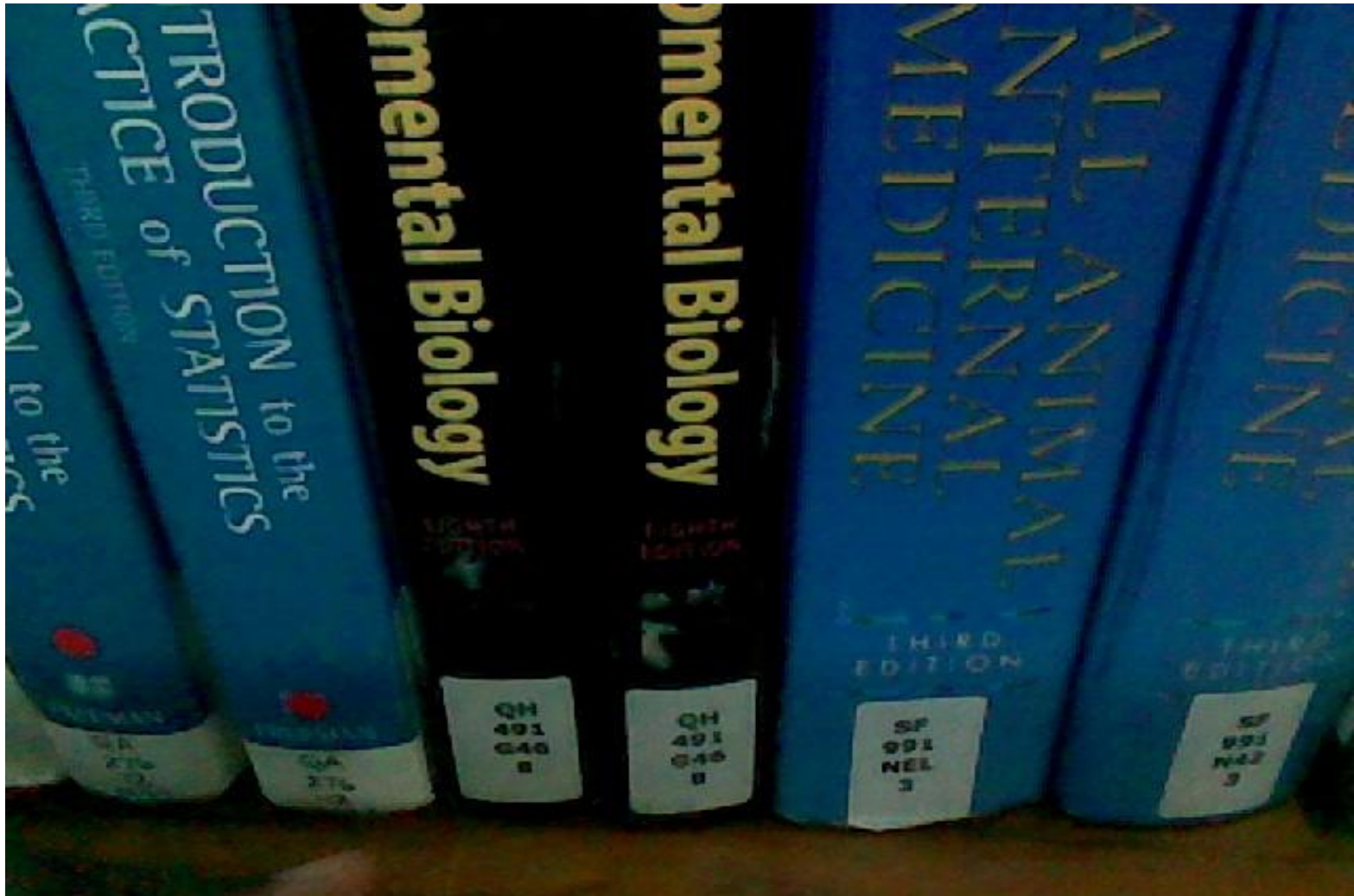


# National Library of New Zealand e-Cataloguing Workflow Chart .

## W3: Cataloguing on WorldCat using Connexion



# Book spine label



# CompuType Book spine label printer



# Book spine label printer cont.



Thank you